

# Perspective On MOLD / MILDEW / FUNGUS

- \*Mold may cause health problems;
  - ◇ Allergy-type symptoms are the most common.
  - ◇ People can react very differently to mold.
  - ◇ The color of the mold is irrelevant.
- \*Visible mold growth should NOT be tolerated in occupied indoor areas

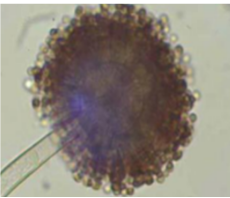
## COMMON INDOOR MOLDS

### 1. *Aspergillus* spp.



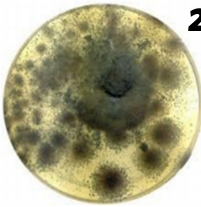
\*There are fewer than 40 of them are known to cause infections in humans. *Aspergillus fumigatus* is the most common cause of human *Aspergillus* infections. Other common species include *A.flavus*, *A.terreus* and *A.niger*.

◇ People with weakened immune systems or lung diseases are at a higher risk of developing health problems due to *Aspergillus*. The types of health problems caused by *Aspergillus* include allergic reactions, lung infections, and infections in other organs.



◇ When inhaled *A.niger* can cause hypersensitivity reactions such as asthma, sinuses and allergic alveolitis. Hard to detect in patients, however possible to be cured if treatment started at early stage of disease.

### 2. *Talaromyces* spp.



\*Common potential fungal pathogen in the indoor environment

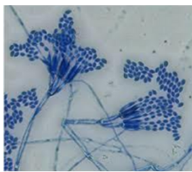
\*Often found in the environment or enclosed spaces that used to papers, books, documents or archives such as libraries

\*Can cause potential hazard to respiratory health of the occupants

\*Can cause infection via skin trauma, digestive tract and inhalation

\*Can be endemic

◇ Can infect immuno-compromised individuals and caused serious infections at bone marrow, intestine, kidneys, lungs, lymph nodes, liver, spleen, skin, and soft tissue.

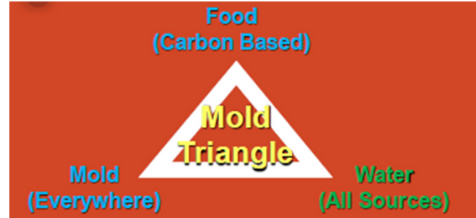


### 3. *Sporisorium* spp.

\*Plant pathogen

\*Presence of this species could be due to surrounding vegetation

◇ The harmfulness of this species to human beings is still unknown.



## Allergic Rhinitis?

### Caused by?

### Mold / Fungal

## Signs / Symptoms

- \*Sneezing
- \*Runny or stuffy nose
- \*Coughing
- \*Wheezing
- \*Redness of the eyes
- \*Itchy eyes, nose and throat
- \*Watery eyes
- \*Dry, scaly skin
- \*Skin irritation, or rash
- \*People with serious mold allergies may have more severe reactions, including shortness of breath.
- \*People with asthma who are allergic to mold, breathing in spores can also cause asthma attacks.

## ICOP On IAQ

### \* Objectives of ICOP

◇ To set minimum standards that will protect the health of employees and other occupants of an indoor or enclosed environment served by a common mechanical ventilation and/or air conditioning system.

### \* Application

◇ ICOP apply to all non-industrial places of work in industries listed under Schedule 1 of the Occupational safety and health act 1994 (OSHA)